

## Table of Contents

|  |           |
|--|-----------|
| <b>SAFETY INSTRUCTIONS .....</b>             | <b>3</b>  |
| <b>SYMBOLS USED ON THE RECEIVER .....</b>    | <b>4</b>  |
| <b>GENERAL INFORMATION .....</b>             | <b>5</b>  |
| 1. Main Features .....                       | 5         |
| 2. Unpacking .....                           | 6         |
| 3. General Operation of STB .....            | 6         |
| <br>   |           |
| <b>OVERVIEW OF THE EQUIPMENT .....</b>       | <b>7</b>  |
| 1. Front Panel .....                         | 7         |
| 2. Remote Control Unit .....                 | 8         |
| 3. Rear Panel .....                          | 10        |
| 4. Installation of STB .....                 | 11        |
| 4.1 Connecting to TV using RCA Support ..... | 11        |
| 4.2 Connect to TV using YCbCr support .....  | 11        |
| 4.3 Connecting to TV using RF Support .....  | 12        |
| 4.4 Connect to another SVR .....             | 12        |
| <br>   |           |
| <b>THE FIRST SETUP .....</b>                 | <b>13</b> |
| <b>MAIN MENU INFORMATION .....</b>           | <b>13</b> |
| <b>MENU OPERATION .....</b>                  | <b>14</b> |
| 1. System Setting .....                      | 14        |
| 1.1 Time Setting .....                       | 14        |
| 1.2 Change Pin Code .....                    | 15        |
| 1.3 A/V Setting .....                        | 15        |
| 1.4 Factory Setting .....                    | 16        |
| 1.5 Schedule List .....                      | 16        |
| 1.6 PVR Setting .....                        | 17        |

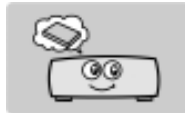
USER'S MANUAL

---

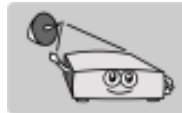
|   |           |
|---|-----------|
| 2. Channel Setting .....                          | 18        |
| 2.1 Channel Search .....                          | 18        |
| 2.2 Sort Channel .....                            | 19        |
| 2.3 Antenna Feed: .....                           | 19        |
| 3. Channel List .....                             | 19        |
| 4. Favorites List .....                           | 21        |
| 5. System Info .....                              | 22        |
| 6. EPG .....                                      | 22        |
| 7. Record .....                                   | 23        |
| 7.1 Record Current Service .....                  | 23        |
| 7.2 Set recording stop during recording .....     | 23        |
| 8. Playback .....                                 | 23        |
| 8.1 Playback List .....                           | 23        |
| 8.2 Play a recorded program .....                 | 24        |
| 8.3 Rename a recorded program .....               | 24        |
| 8.4 Delete a recorded program .....               | 24        |
| 8.5 Parental Lock/Unlock a recorded program ..... | 24        |
| 8.6 Pause and Step .....                          | 25        |
| 8.7 Jump forward/backward .....                   | 25        |
| 8.8 Bookmark .....                                | 25        |
| 8.9 Repeat .....                                  | 25        |
| 8.10 Go to appointed position .....               | 26        |
| 8.11 Slow .....                                   | 26        |
| 8.12 FF .....                                     | 26        |
| 8.13 REW .....                                    | 26        |
| <b>TECHNICAL SPECIFICATION .....</b>              | <b>27</b> |
| <b>TROUBLE SHOOTING .....</b>                     | <b>28</b> |

## SAFETY INSTRUCTIONS

Please read these safety instructions through carefully, before operating the receiver. Please observe all warnings and instructions on the equipment and contained in these operating instructions.



Be sure to read this user's manual before starting your operation.



You must install the dish with correct direction and angle. If the receiver antenna is not working properly, contact your local dealer.



Never open the cover. It is very dangerous to touch the inside of the unit due to possible electric shock.



Install the unit horizontally. Unbalanced installation may cause the unit to be damaged by itself.



When you don't use this unit for a long time, please pull the power cord from the outlet. Also do not use a damaged power cord.



When the unit is suddenly moved to a hot area from a cold area, it may cause problems. In that case, turn off the power, and turn on after 1-2 hours.



Do not touch the power with wet hand. If there is liquid flowing into the unit, pull out the power cord immediately because it may cause fire or electric shock.



Install the unit in a place with:  
 good ventilation  
 suitable temperature  
 no direct sunrays  
 low humidity  
 low vibration influence



Place the unit in a well ventilated and no heat environment.



Do not put heavy objects on the unit.

## SYMBOLS USED ON THE RECEIVER

The next paragraphs explain the meaning of the symbols, present on the receiver.

---



### **The Digital Video Broadcasting logo.**

This logo tells you that this receiver is compliant with the DVB standards as registered under registration number 2347.

---



### **The caution risk of electrical shock - do not open symbol**

This symbol tells you that you are not allowed to open the receiver. Only authorized (service) technicians are allowed to open the box.

---



### **The CE mark.**

This mark tells you that the receiver is following the provisions of Council Directive 89/336/EEC on the approximation of the laws of the Member States relating to the electromagnetic compatibility and the provisions of Council Directive 73/23/EEC and 93/68/EEC on the approximation of the laws of the Member States relating to low voltage and electrical safety.

---



### **The double insulation symbol.**

This symbol tells you that the receiver is electrically safe within the normal use of the receiver as stated in the safety chapter.

## GENERAL INFORMATION

The STB is a highly cost-effective FTA digital terrestrial receiver integrated. It provides 600 channels storage with fast searching and inter-channel switching capability. And this PVR is the product that can record and playback terrestrial digital broadcasts. Thus, you can view a variety of programs provided through terrestrial. Simply pressing the power button of the remote control unit, the crystal clear picture and DVD quality sound of digital broadcasting that your TV portrays through this product, allows you to watch whatever channel you wish off the digital broadcasting network. The STB is definitely one of the best choices to deliver your digital life.

### 1. Main Features

1. 7 days Electronic Program Guide(EPG)
2. Fully compliant with MPEG-2 Digital & DVB broadcasting
3. Fast Zapping
4. 5 favorite channel groups
5. 8 bit colors on screen display (OSD) supported
6. Time adjustment
7. Closed Caption
8. TV/AV conversion, VCR automatically conversion
9. Powerful channel edit functions
  - Sorting: Alphabetic order
  - Delete, Edit Favorites
  - Parental Lock, Channel Rename
10. Software upgrade via RS-232 serial port
11. EPG schedule record or play
12. Teletext output with both VBI and OS
13. Logical channel number (LCN) Supported
14. Summer Time supported

### PVR features

1. HDD function
2. Tested with up to 250GB HDD from several HDD vendors
3. Time shift (buffering):2 ~ 16 hours (depending on HDD)

## USER'S MANUAL

---

4. Recording time: up to 120 hours (depending on HDD)
5. Variable forward play speed: 1, 2, 4, 8, 12, 1/2, 1/4, 1/8, 1/12
6. Variable reverse play speed: 1, 2, 4, 8, 12, 1/2, 1/4, 1/8, 1/12
7. Variable combination of watching and recording simultaneously (Watch or record Live while Recording another program)
8. Edit recorded files

## 2. Unpacking

Unpack the receiver and check to make sure that all of the following items are included in the packaging.

- ❖ 1 x Remote Control Unit (RCU)
- ❖ 1 x User's Guide
- ❖ 1 x Set Top Box
- ❖ 1 x RF Male to RF Female Cross Cable
- ❖ 1 x AV Connecting Cable

## 3. General Operation of STB

Throughout this manual you will notice that the everyday operation of your STB is based on a series of user friendly on screen display and menus. These menus will help you get the most from your STB, guiding you through installation, channel organizing, viewing and many other functions.

All functions can be carried out using the buttons on the RCU, and some of the functions can also be carried out using the buttons on the front panel.

If at any time when using the menus you want to return to the normal TV mode, press the TV/AV button.

Should you experience any difficulties with the operation of your unit, please consult the relevant section of this manual, including the Problem Shooting, or alternatively call your dealer or a customer service adviser.




### NOTE:

Please be aware that new software may change the functionality of the receiver. The photo and the function explanation involved in this specification is for reference only. If there is any mistake, please refer to the entity.

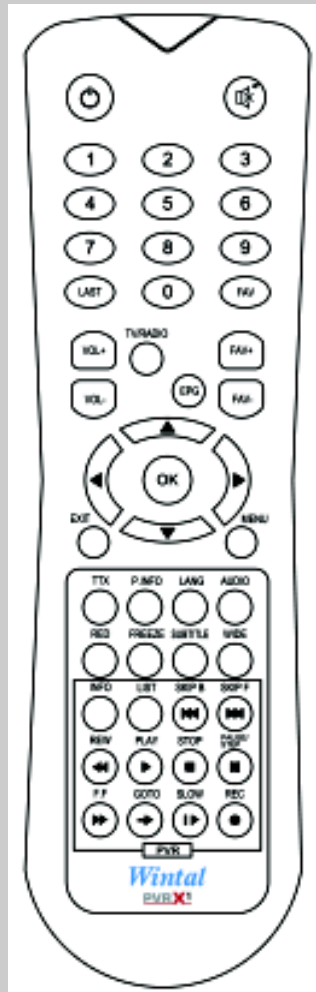
## OVERVIEW OF THE EQUIPMENT


### 1. Front Panel




-  : Press to switch between operation and standby mode
- MENU** : Show the Main Menu and command box on the screen
- OK** : Execute the selected item in the menu
-  : When watching, change to the previous or next channel, or move to the next higher or lower item in the menu
-  : When watching a channel, adjust the volume or move to the left or right item in the menu.

## 2. Remote Control Unit



 : Press to switch between Operation and Standby modes

 : Press to temporarily cut off the sound

**0-9** : Press to enter required numbers in the input box or select a channel to watch

**LAST** : Returns to previous program.


**FAV** : Press to display the FAV list

**VOL+/-** : Press to adjust the value of the volume

**TV/RADIO** : Press to switch between TV and Radio modes

**EPG** : Press to display EPG (Electronic Program Guide) menu

**FAV+/-** : Press to page up or down in the favorite list

 : Move cursor up/down/left/right, Page up/down, Volume +/-

**OK** : Press to execute the selected item in the menu, or to confirm the desired value in input mode

**EXIT** : Press to return to the previous menu or escape from the item

**MENU** : Press to display the Main Menu on the screen

**TTX** : Press to enter the teletext window

**INFO** : Press to show information of the current channel

|                  |  |
|------------------|--|
| <b>LANG:</b>     | Press to switch the audio languages  |
| <b>AUDIO:</b>    | Press to switch the audio channel among the Left, Right, Mono and Stereo modes   |
| <b>RED:</b>      | Have their corresponding functions in specified menus.   |
| <b>FREEZE:</b>   | Press to switch between Pause and Play   |
| <b>SUBTITLE:</b> | Subtitle hotkey will select DVB bitmap type titles. Note that subtitles may not always work as the broadcaster may not provide the service |
| <b>WIDE:</b>     | Use this HOTKEY to select your television screen output format. Continuously press this button to toggle through the different modes.      |

### The List For PVR

|                    |   |
|--------------------|---|
| <b>INFO:</b>       | Open status banner or switch between status banner and recording Info     |
| <b>LIST:</b>       | Press to display the Recorded Program Lists window                        |
| <b>SKIP B:</b>     | Press to jump backward when backplay from HDD and the status bar is shown |
| <b>SKIP F:</b>     | Press to jump forward when backplay from HDD and the status bar is shown  |
| <b>REW:</b>        | Fast backward   |
| <b>PLAY:</b>       | Return to Normal Speed Playback from FF/FB/Slow/Paused mode.              |
| <b>STOP:</b>       | Stop playback when playback or stop recording when recording.             |
| <b>PAUSE/STEP:</b> | Pause from live video or playback, and step when playback in Paused mode. |
| <b>F.F:</b>        | Fast forward  |
| <b>GOTO:</b>       | Go to appointed position when playback.                                   |
| <b>SLOW:</b>       | Press to slow at 1/2, 1/4, 1/8 speed                                      |
| <b>REC:</b>        | Record current service or set stop recording time when recording.         |

### 3. Rear Panel

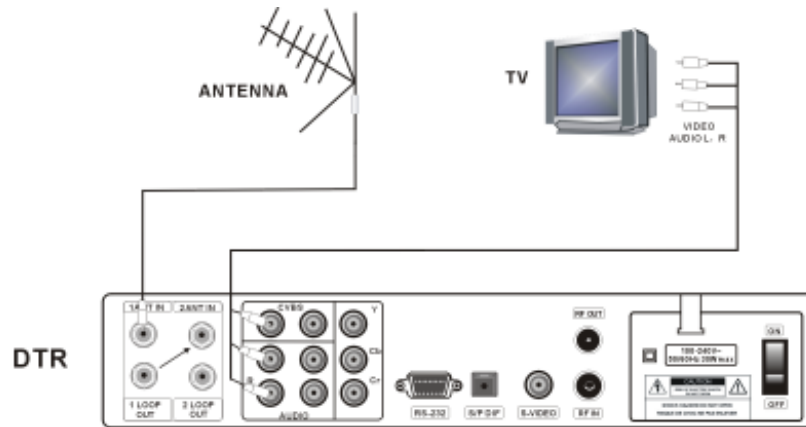


- 1 ANT IN:** Connect to terrestrial antenna (IF input from LNB to digital tuner)
- 2 ANT IN:** Connect to terrestrial antenna, or connect to 1LOOP OUT when recording program by using the RF cable
- 1LOOPOUT:** Connect to another receiver, or connect to 2ANT IN when recording program by using the RF cable
- 2LOOPOUT:** Connect to another receiver
- CVBS:** Connect to the TV using RCA jack (CVBS output to TV)
- YCbCr (COMPONENT) OUT:** Connect to a TV or Monitor with Component input.  
Compatible with high definition signal
- L/R-AUDIO:** Connect to TV or audio tuner
- RS232:** Connect to a PC for software upgrade
- S/P DIF :** Connect to a hi-fi system
- S-VIDEO:** Connect to the S-VIDEO jack of the TV
- RFOUT:** RF output to TV set's antenna in
- RFIN:** Input from satellite TV antenna
- 100-240V~ :** Power supply
- ON/OFF:** Main power switch

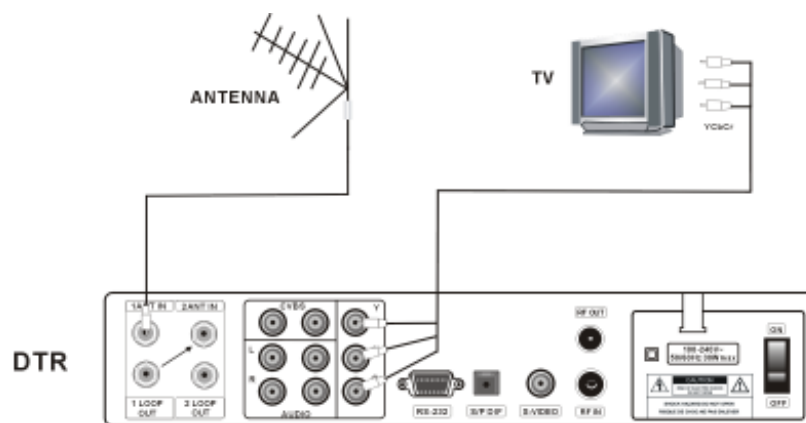
## 4. Installation of STB

This section explains the installation of the receiver. Refer to the manuals supplied with the equipment for the installation of outdoor equipment such as the dish antenna. When adding new equipment, be sure to refer to the related parts of the manual for the installation.

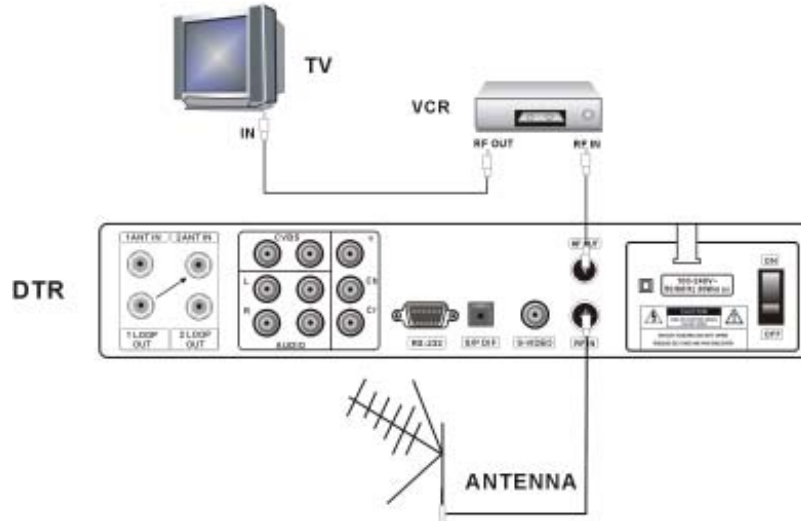
### 4.1 Connecting to TV using RCA Support



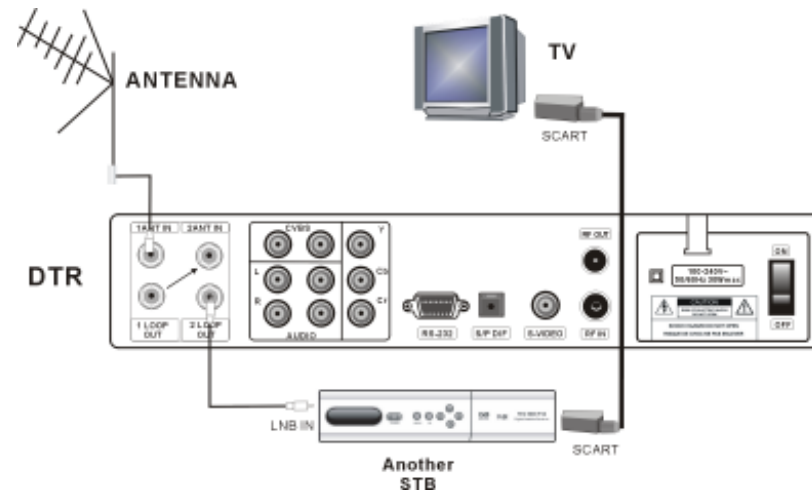
### 4.2 Connect to TV using YCbCr support



### 4.3 Connecting to TV using RF Support



### 4.4 Connect to another SVR



## THE FIRST SETUP

The user interface has various ways to navigate through the menus and functions. Some of the keys on the remote control unit give direct access to functions. The most important keys are identified as EPG, colored keys, MENU and OK. Other keys are multi-functional which means that their function changes dependent of the mode that you are in.

Unless otherwise specified; this note explains the way you can navigate through the pages of the user menu.

1. Use the ◀▶ keys to move the cursor left or right from one line to another line.
2. Use the ▲▼ keys to move the cursor up or down from one line to another line.
3. Use the OK key to enter the sub-menu.
4. Use the ◀ key to delete character in the input box.
5. Use the EXIT key to leave the menu and return to the view mode.
6. In a sub-menu:
  - use the OK key to confirm the selection;
  - the yellow bar indicates the active selection.

## MAIN MENU INFORMATION

Once you have installed and connected the cables of the STB, press MENU key on the RCU to display the main menu.

This menu consists of 6 menu options as shown below.



- ❖ System Setting
- ❖ Channel Setting
- ❖ Channel List
- ❖ Favorite List
- ❖ System Info
- ❖ EPG

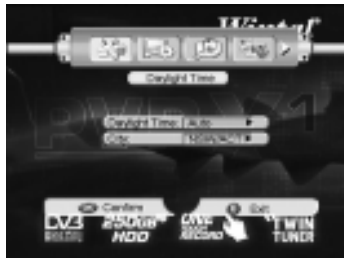
## MENU OPERATION

### 1. System Setting

#### 1.1 Time Setting

The menu consists of Daylight Time Setting, SleepTimer Setting and Banner Time Setting.

##### Daylight Time Setting



Select the Daylight Time Setting item and press OK to display the sub-menu, then press ► to show the drop-down list box. You can move the cursor up and down by using ▲▼ keys to select the desired option and press OK key to confirm. City: Select the city you living in.

##### Sleep Timer Setting



You can set a sleep timer from the pro-program one (No Sleep, 5, 10, 20, 30 and 60 minutes). These timer represent that how long a time you want to power off your STB automatically from the moment you press OK on. No Sleep means never power off.

Select the Sleep Timer Setting item and press OK to display the sub-menu, then press ► to show the drop-down list box. You can move the cursor up and down by using ▲▼ keys to select the desired option and press OK key to confirm.

### Banner Time Setting



The setting is provided to set the display duration of the Info Banner on the menu.

Select the Display Time item and press OK to display the sub-menu, then press ► to show the drop-down list box. You can move the cursor up and down by using ▲▼ keys to select the desired option and press OK key to confirm.

### 1.2 Change Pin Code



First enter the current password by using numeric key on the RCU at the Old PIN option.

Second enter a new password at the New PIN.

Enter the new password again to confirm.

After setting well, move the cursor to OK button on the menu and press OK key on the RCU to finish.

### 1.3 A/V Setting

This menu will help you to configure your STB output parameters.

Select the A/V Setting item and press OK to display the sub-menu. You can customize:



**TV Shape:** Press ► to display the sub-menu, and select the desired output display format between 4:3 and 16:9.

**Conversion:** Three selections are provided as LetterBox, Pan&Scan and FullFrame. To select the one for your screen mode.

**AV Standard:** Two selections are provided as AUTO, PAL. To select the one that fits your television.

**Video Output:** Five selections are provided as AUTO, CVBS, S-Video and YCbCr. To select the one that fits your television.

**UHF Standard:** NTSC-M, PAL-G, PAL-I and PAL-DK are supported. You can adjust the

modulator type.

**UHF Channel:** Modulator channel can be changed from the channel 21 to channel 69.

## 1.4 Factory Setting



If you want to bring the STB back to the factory default condition, select Factory Setting item. Before entering this menu, you must input a password. The default password is 0000.

Then a warning message will be displayed. To confirm, select **ok**.

**Warning:** On selecting factory default you will lose all of data and information, which was previously installed.

## 1.5 Schedule List



In the menu, you can get the information about the booked channel. When the booked event comes, it will start to record or play the booked channel.

Press OK key to enter the Book Even window to book channel.

In this window, you can operate as the following:

**Event ID:** Press **▶** key to display the sub-menu and select the ID of recording service. The range is 1 ~ 15.

**Service:** Press OK to enter the service list, and select the desired service.

**Start Time:** Enter the start time by using numeric keys.

**Start Date:** Enter the start date by using numeric keys.

**Duration:** Input the value of the recording duration.

**Event Type:** Select the desired option among ONCE, DAILY and WEEKLY.

**Purpose:** Select PLAY or RECORD. If select PLAY, it will start to play when the schedule channel comes. If select RECORD, it will start to record when the booked channel comes.

**Status:** Select OFF or ON. If ON is selected, the above data will be save. If you select OFF, the above data will be lost.

This operation will always use Reserved channel, If Reserved channel is already recording, the operation will be aborted, a status message box will be shown to user.

### 1.6 PVR Setting



To operate the following, the HDD must be ready.

**Time Shift :**

This function is used to enable or disable TimeShift.

If the Enabled is selected, you can set the duration for timeshift from the pre-program options.

**2 Minutes Add:** Select the desired option.

**Jump F/B 30S:** Select the time of jumping forward or jumping backward .

**Format Hard Disk:**

This function is used when user want to clear all programs that have been recorded in the HDD. When install a new HDD, this function is also be used to make the HDD ready.

After Format Harddisk Diver, all data will be lost, and the system will reset.

When system initialize, if the HDD is detected that have never been formatted, this function should automatically run.

**HDD Information:**

This function show some basic information about HDD to user. Includes: HDD status, Disk size, free space size, etc.

## 2. Channel Setting

The menu page allows you to search and sort channels. Press OK key on the Channel Search item to display the sub-menu.

### 2.1 Channel Search

Two ways is provided to search channels(Auto Scan and Manual Scan). Press ► key to show the drop-down list at the Search Type item, and select the desired option by using ▲▼.

#### Auto Scan



**BandWidth:** Select the desired option among 6M, 7M and 8M.

**Encrypted Setting:** Select Not Save or Save. If select “Not Save”, the searched encrypted channels will not be save.

**Update Mode:** Select Replace or Append.

Move the cursor to Start Search button and press OK to enter the Scan Process window. This screen will show the whole scanning process.

#### Manual Scan



If you are familiar with the parameters, you can select the manual scan type to search channels.

**Frequency:** When the range is from 1 to 1000, it displays logical channel number. If more than 1000, it displays frequency.

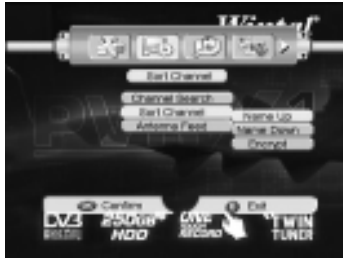
**BandWidth:** Select the desired option among 6M, 7M and 8M.

**Encrypted Setting:** Select Not Save or Save. If select “Not Save”, the searched encrypted channels will not be save.

**Update Mode:** Select Replace or Append.

Move the cursor to Start Search button and press OK to enter the Scan Process window. This screen will show the whole scanning process.

## 2.2 Sort Channel



In order to make a good order of the services, this menu provides you three sorting methods (Name Up, Name Down and Encrypt). To achieve the service sortings, please follow the instructions shown as below:

- 1) Press OK key to display the sub-menu on the Sort Channel item.
- 2) Select the desired method and press OK to confirm.

## 2.3 Antenna Feed:



Select the option to be 0V or 5V. If it is 5V, then the antenna will output 5V/100mA to activate the antenna.

## 3. Channel List



All searched channels are list in this menu. And the parameters of the current channel will be list here, for example, bandwidth, frequency, quality and strength.

You can also execute the operations as the following:

Press Red key to switch between Radio list and TV list.

Press OK key to play the selected channel in full-screen.

Press ► key to display the sub-menu, you can see as follows: Add, Modify, Delete, Lock&Unlock and Move.

## USER'S MANUAL

### How to add a new channel



- 1) Press OK after selecting Add mode,
- 2) Press Yellow key to display the character input mode.
- 3) Input the name of the new channel using the 4 arrow keys and numeric keys.
- 4) Set the other parameters for the new channel.

### How to modify the channel



- 1) Select the channel of which you want to modify,
- 2) Press OK after selecting Modify mode,
- 2) Press Yellow key to display the character input mode.
- 3) Input the name of the selected channel using the 4 arrow keys and numeric keys.
- 4) Set the other parameters for the selected channel.

### How to delete the channel



- 1) Select a channel you want to delete,
- 2) Press OK after selecting Delete mode,
- 3) A warning box will appear on screen
- 4) Press OK to confirm, the selected channel is deleted.

### How to lock/unlock the channel



- 1) Select a channel you want to lock/unlock
- 2) Press OK after selecting Lock/Unlock mode,
- 3) A password is requested, the default password is 0000.
- 4) The selected channel is now locked/unlocked,
- 5) Once locked channel is selected while watching television, password is requested.

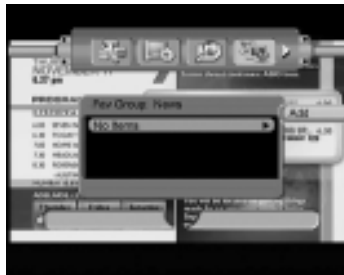
**How to move the channel**



- 1) Select a channel you want to move
- 2) Press OK after selecting Move mode
- 3) Enter the number of the new position in the input box and press OK.

**4. Favorites List**

All favorite channels are shown in the menu, you can execute the operations as the following:  
 Press Red key to switch among 5 favorite groups as News, Movie, MTV, Finance and other.  
 Press ► key to display the sub-menu and press OK to display the channel list.



**How to make a favorite group and add a channel to group**

- 1) Press Red key to select the name of favorite group you want
- 2) Press ► key to display the sub-menu and press OK to display the channel list.
- 3) Select the channel and press OK
- 4) The selected channel will be marked with the symbol of favorite and appear in the favorite group at the same time.



**How to delete the favorite channel from the group**

- 1) Select the channel from the favorite group,
- 2) Press ► key to display the sub-menu and select the Delete mode
- 3) Press OK to confirm

## 5. System Info

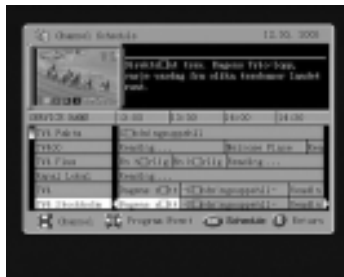
The menu gives all the status information about the STB. You can View: Software version, Hardware version and signal information.

## 6. EPG

The STB provides EPG function for you to get access to the TV Guide that shows the necessary information of the current and future programs on different channels. The information is only available from the network to which the channel you are watching.

Press ▲▼ to select channel.

Press ◀▶ to see previous or next program in one channel.



User can book a channel to record or play in the menu.

Press OK to enter the Book Event window, you can schedule event here.

**Event ID:** Press ► key to display the sub-menu and select the ID of recording service. The range is 1 ~ 15.

**Service:** Press OK to enter the service list, and select the desired service.

**Start Time:** Enter the start time by using numeric keys.

**Start Date:** Enter the start date by using numeric keys.

**Duration:** Input the value of the recording duration.

**Event Type :** Select the desired option among ONCE, DAILY and WEEKLY.

**Purpose:** Select PLAY or RECORD.

**Status:** Select OFF or ON.



This operation will always use Reserved channel, If Reserved channel is already recording, The operation will be aborted, a status message box will be shown to user.



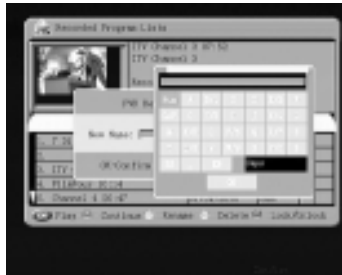
## 8.2 Play a recorded program

In the Record Program List window, press OK key will start play back the highlighted program from the beginning. Last stopping point will always be saved when play-back a recorded program and press STOP Key.

If the program is locked, PIN code input is needed before playing.

And press red key to continue record the program.

## 8.3 Rename a recorded program



Press Green key will bring up the “Rename” menu to edit the name of the highlighted title. There is a virtual keyboard for the user to input characters.

## 8.4 Delete a recorded program



Press Yellow key will bring up the “Delete” menu to delete the current selected title. On the confirmation menu, press OK will delete the current selected title from hard disk.

## 8.5 Parental Lock/Unlock a recorded program



Press Blue key will bring up the “Lock/Unlock” menu to set parental lock for the current selected title.

## 8.6 Pause and Step

When playback from HDD(include timeshift), This feature can be used.

Press Pause in Normal Mode, the playback will be paused.

Press Play in Paused mode, the playback will change to Normal Mode.

When in Paused Mode, Press Pause, can play Step by Step.

## 8.7 Jump forward/backward

When playback from HDD(include timeshift), and status banner is shown, this feature can be used.

Press SKIP F, it will jump forward.

Press SKIP B, it will jump backward.

Continuous jump should be supported.

## 8.8 Bookmark



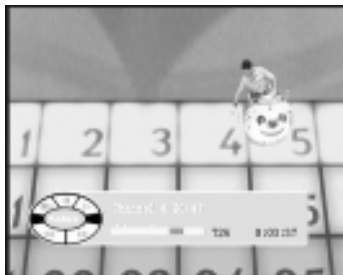
When playback from HDD(include timeshift), and status banner is shown, this feature can be used.

Use Green key to set a Bookmark point.

Use Yellow key to go to a Bookmark that have been set.

Set Bookmark in point that has been already set bookmark, the bookmark will be disabled.

## 8.9 Repeat



When playback from HDD(include timeshift), and status banner is shown, This feature can be used.

Use Blue key to set start point for repeat. Again Blue key to set end point for repeat. Then repeat will work. When never it reaches the end point of repeat area, it will jump to start point automatically. Another Blue key pressed will disable the repeat area.

## 8.10 Go to appointed position



When playback from HDD(include timeshift), and status banner is shown, This feature can be used.

Use Goto key to call Goto function, then input a position( a time value ) to jump to.

## 8.11 Slow

When playback from HDD(include timeshift), this feature can be used.

Press Slow in Normal mode, it will change to 1/2 mode.

Press Slow in 1/2 mode, it will change to 1/4 mode.

Press Slow in 1/4 FB mode, it will change to 1/8 mode.

Press Slow in 1/8 FB mode, it will change to Normal mode.

## 8.12 FF

Fast Forward

Press FF in Normal mode, it will change to Smooth FF mode.

Press FF in Smooth FF, it will change to 4x FF mode.

Press FF in 4x FF mode, it will change to 8x FF mode.

Press FF in 8x FF mode, it will change to 16x FF mode.

Press FF in 16x FF mode, it will change to Normal mode.

## 8.13 REW

the same as Fast Backward

When playback from HDD(include timeshift), this feature can be used.

Press REV in Normal mode, it will change to 4x FB mode.

Press REV in 4x FB mode, it will change to 8x FB mode.

Press REV in 8x FB mode, it will change to 16x FB mode.

Press REV in 16x FB mode, it will change to Normal mode.

## TECHNICAL SPECIFICATION

| <b>Tuner</b>                                    |                                |
|---|--------------------------------|
| Input Level                                     | -90 ~ -20 dBm                  |
| Input Frequency                                 | 47~ 862MHz                     |
| Bandwidth                                       | 7 ~ 8 MHz                      |
| Input Impedance                                 | 75 Ohms                        |
| Carrier Mode                                    | 2K / 8K                        |
| FEC Code Rate                                   | 1/2,2/3,3/4,5/6,7/8            |
| <b>Mpeg transport stream &amp; A/V decoding</b> |                                |
| Video Standard                                  | ISO/IEC 13818-2,MPEG-2 MP@ML   |
| Video Format                                    | PAL/NTSC Video                 |
| Aspect Ratio                                    | 4:3, 16:9                      |
| Video Resolution                                | 720x576(PAL), 720x480(NTSC)    |
| Audio Standard                                  | ISO/IEC 13818-3                |
| Audio Decoding                                  | MPEG-1 & MPEG-2 layer I and II |
| Audio Mode                                      | Mono / Dual / Stereo           |
| <b>Ambient</b>                                  |                                |
| Operating temperature                           | 0~ 40°C                        |
| <b>Rear Panel</b>                               |                                |
| RF Input  | IEC-type, connector Female     |
| RF Loop Through Output                          | F-type, connector Female       |
| RF Modulator                                    | CH21-69                        |
| Y/C Output                                      | CVBS, S-VIDEO, YCbCr           |
| Digital Audio Out Modulator                     | S/P DIF                        |
| RS232 Serial Port                               | DB-9 Female, 11.52Kbps         |
| <b>Others</b>                                   |                                |
| Input Voltage                                   | AC 100-240, 50/60Hz            |
| Power Consumption                               | Max. 38 Watts                  |

## TROUBLE SHOOTING

There may be various reasons for the abnormal operation of the unit. Therefore, if the unit is not working properly, check the unit according to the procedures shown in the table below.

| Problem                            | Possible Causes  | Remedy   |
|------------------------------------|--|--|
| LED on front panel does not light. | AC power cord disconnected.                                      | Connect power cord properly into the power socket.   |
| No picture or sound.               | Wrong connection of the video/audio output to TV input terminal. | Connect two terminals correctly with scart cable or RCA or RF cable.   |
|                                    | Wrong Connection of satellite antenna cable.                     | Connect the antenna cable correctly.   |
|                                    | Wrong direction of satellite antenna.                            | Adjust the direction of antenna.   |
|                                    | No signal or weak signal.  | Check the cable connections, TV and other equipment connected between the TV and the receiver or adjust the antenna. |
|                                    | Wrong setting of channel information in menu screen.             | Type the setting value correctly.  |
| Black and white screen or V-Hold.  | Your TV mode is different from Set Top Box broadcasting mode.    | Use AV mode.   |

| <b>Problem</b>                        | <b>Possible Causes</b>                                    | <b>Remedy</b>                                      |
|---------------------------------------|---|--|
| The remote controller is not working. | Battery exhausted.  | Change the batteries.                              |
|                                       | Fluorescent light interfering with the remote controller. | Switch off the light.                              |
|                                       | Remote controller is incorrectly aimed.                   | Select clear flow between remote and the STB.      |
| Distorted menu screen.                | Too high brightness and contrast level of TV set.         | Adjust brightness and contrast to low level.       |
| Not working.                          | Process Down.   | Unplug the power from the wall and plug back on it |